

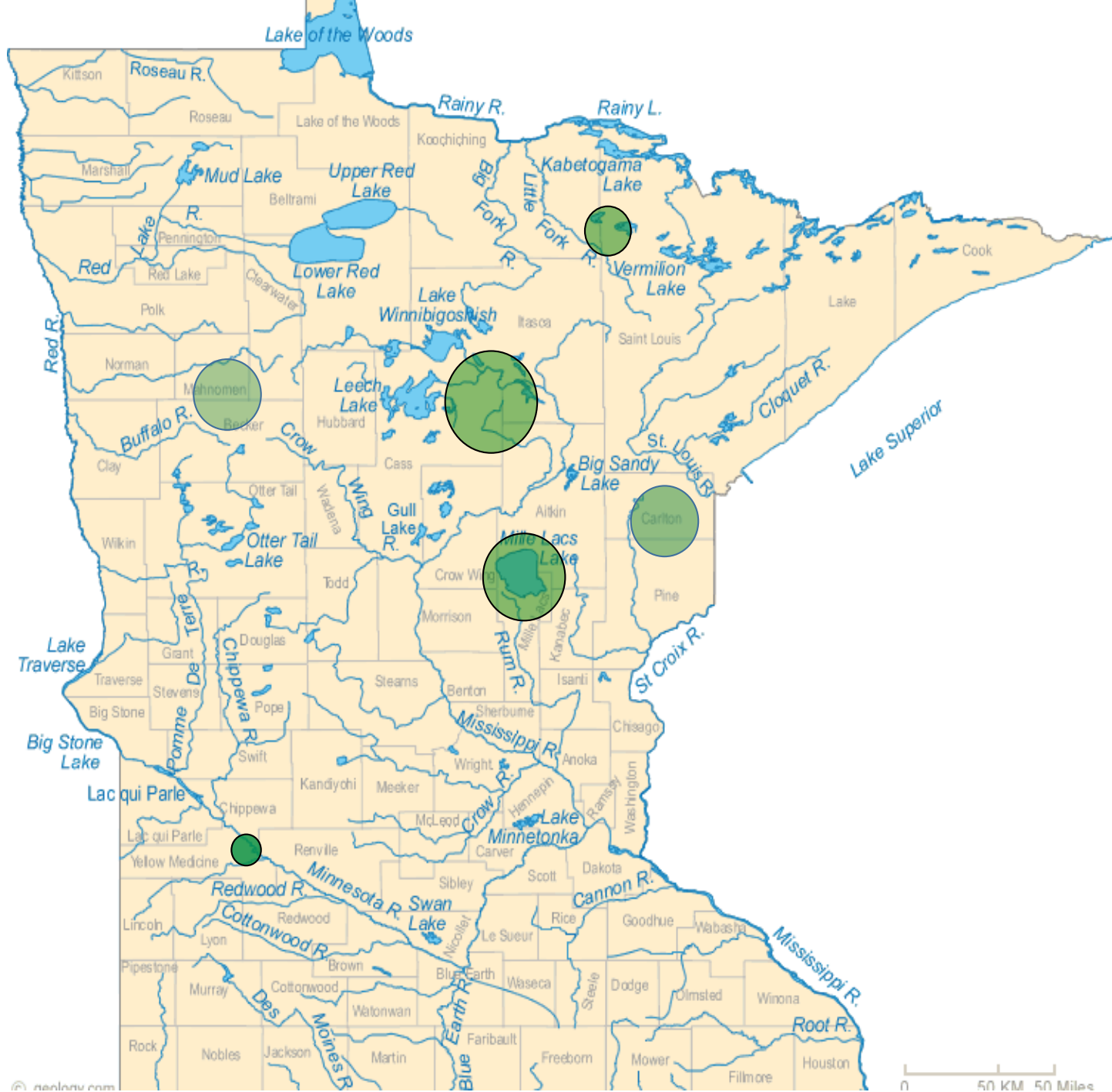
Boozhoo! Welcome!

Thinking Tribally, Acting Locally Approaches for Creating Health Policy

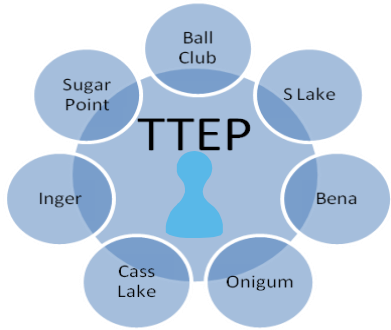
Carol Hernandez, Mille Lacs Band of Ojibwe

Jessie Kier, White Earth Ojibwe

Sheri Scott, Scott Consulting Partners



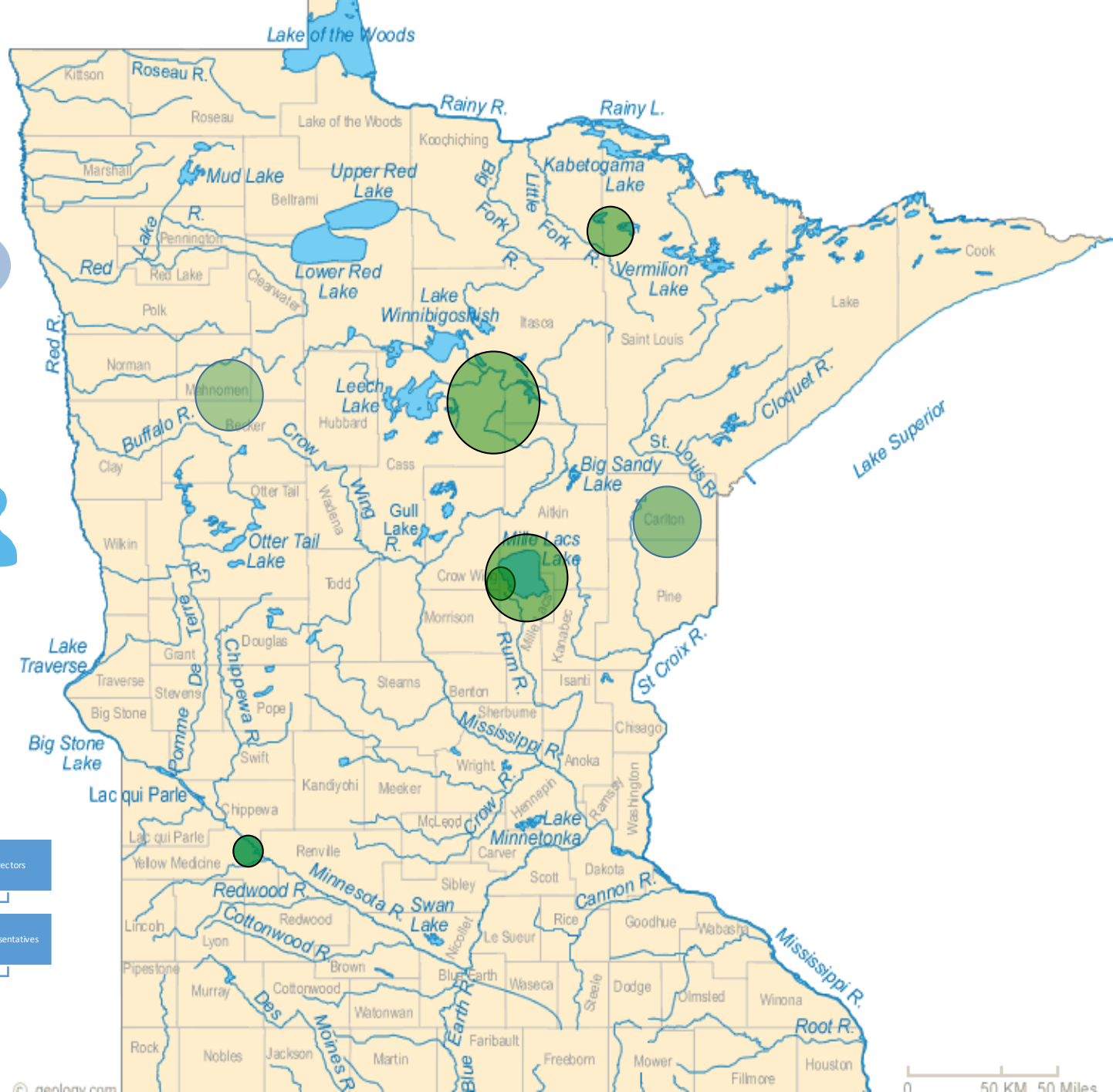
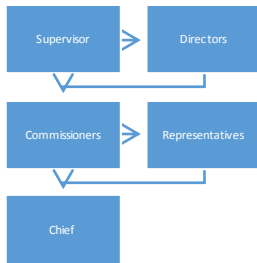
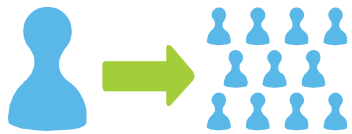
Local coalition



Direct Networking



Grassroots education plus up-the-chain policy approach



Points to Consider

- What is policy?
 - Formal
 - Informal
 - Spiritual leaders and cultural messages reaches our people
- Who are the decision makers/who has the authority?
 - Find out where are your policies? Where do they live?
 - After knowing chain of command – how do you reach them?
- How is policy implemented?
 - Great policies don't help if they just sit in a book
 - Informal changes just as important
 - might not be written down but reflect important changes in protocol
 - Powwow, Big Drum, Spiritual Leaders



We will always use our tobacco



LESSON #
1

The vision is
cultural RESTORATION



LESSON
2

**BE A PATIENT & HOPEFUL
GARDENER**

LESSON #
3



Someone's
Listening!