

State of Emergency on the Navajo Nation:

LESSONS LEARNED FROM CONNECTING COMMUNITY DEVELOPMENT
AND TRIBAL PUBLIC HEALTH

Welcome & Introduction



Sonlatsa Jim-Martin “Sunshine”

Navajo-Modoc

Department Manager

Administrative Service Centers (ASC)

Division of Community Development

NAVAJO NATION

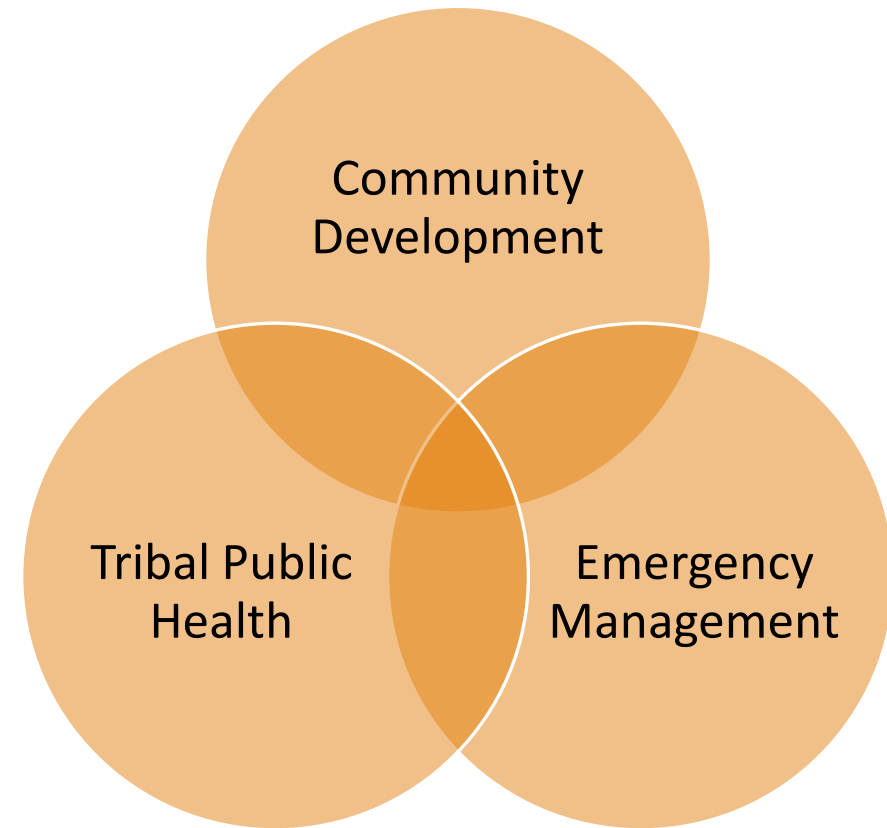
Email: sjim-martin@nndcd.org

Cell: 505-567-0398

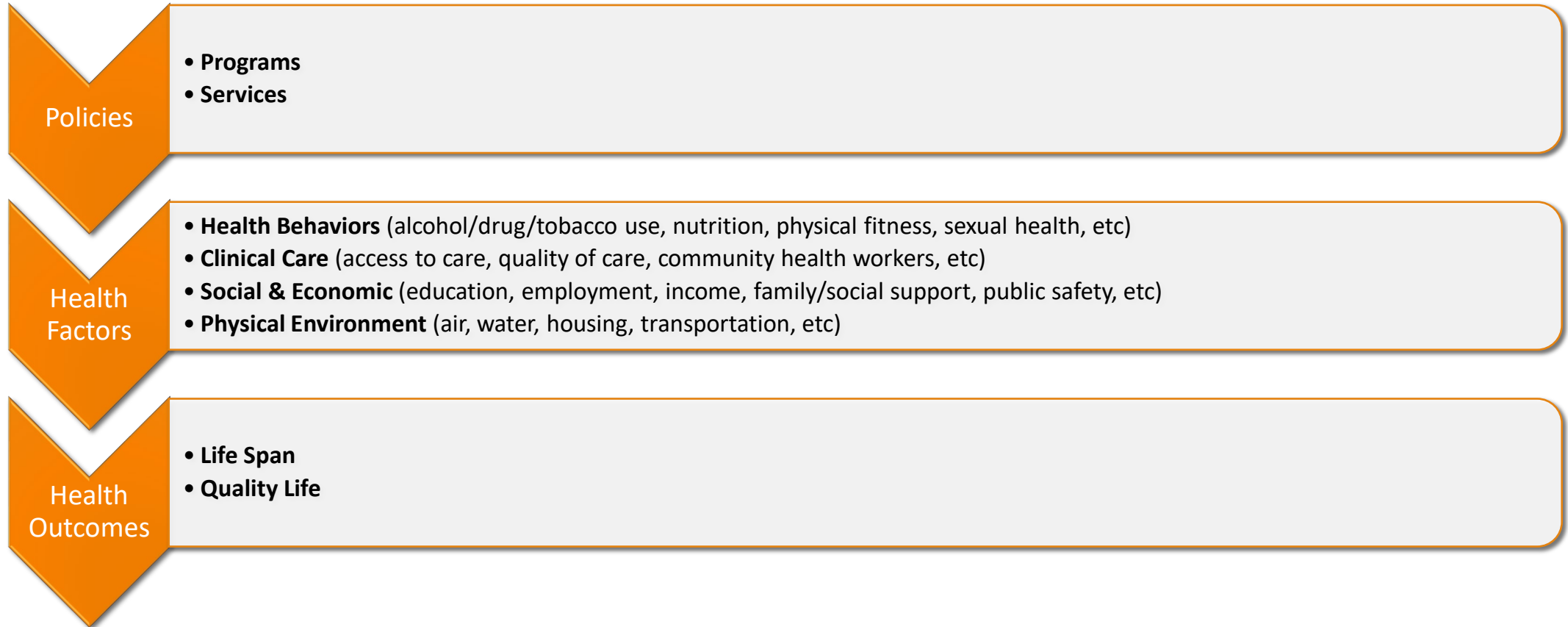
Public Health reconnects to Community Development

The Navajo Nation Division of Community Development made efforts to coordinate with the Navajo Department of Health Command Operations Center from the being of the COVID-19 Emergency Declaration.

It was critical for public health to reconnect to community development on the Navajo Nation during this emergency response. Community Development is tied to local government communities called Chapters and they make an impact on the **health outcomes**.



Building Health Equity with Community Development Partnerships



Examples of Health Outcomes on the Navajo Nation

Healthcare Funding - The Navajo Area Indian Health Service, the primary health care provider for the Navajo people, receives funding that only meets about 54% of healthcare needs

Access to Healthcare - Access to basic health service presents challenges for majority of the Navajo people, due to isolation and remoteness of rural areas where families live.

Health Status - The Navajo Nation experiences a heavy disease burden.

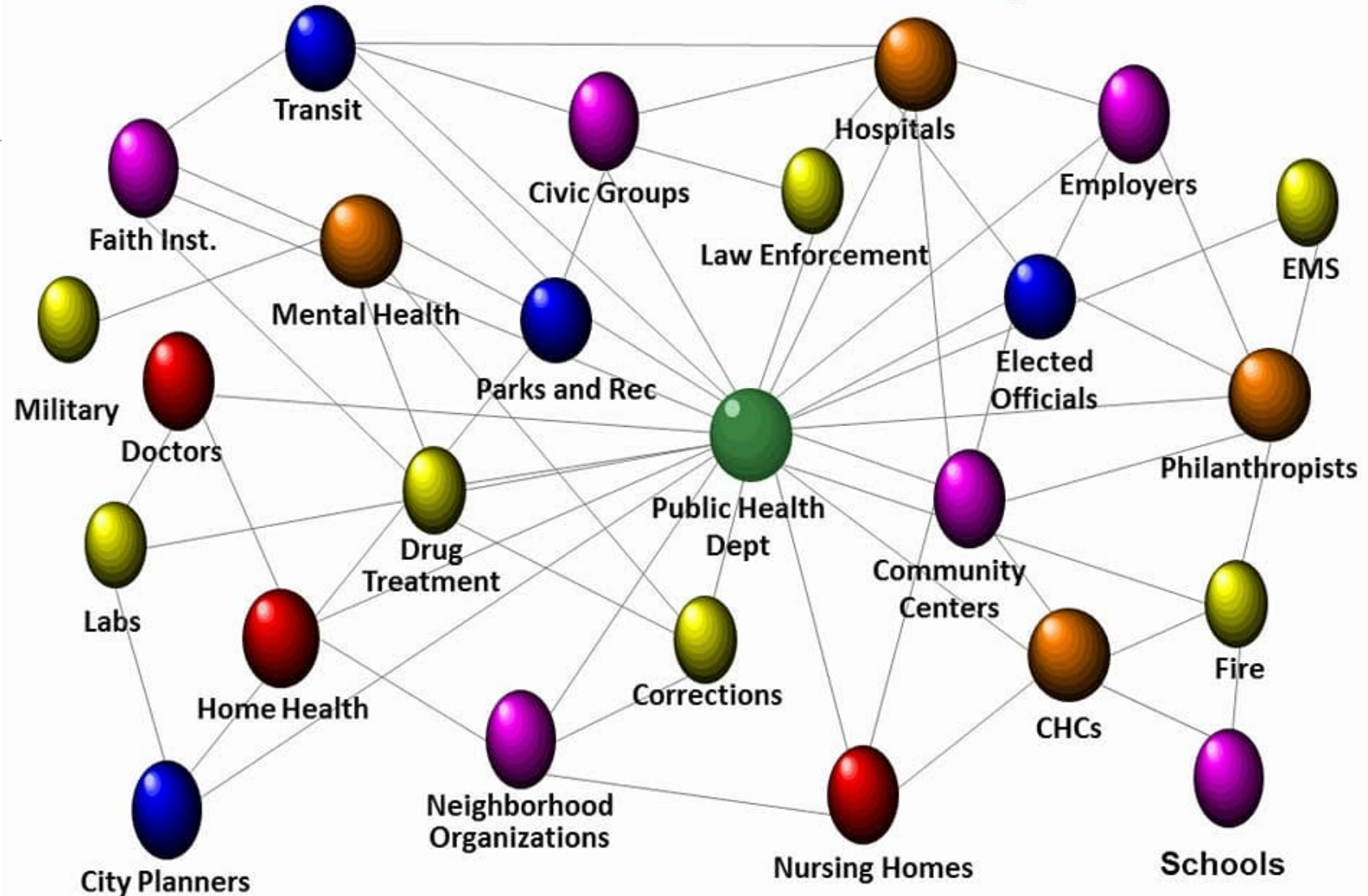
Remoteness & Ruralness - The Navajo Nation is the largest land-based reservation covering nearly 27,000 square miles which is extremely rural and remote.

Infrastructure & Health Facilities - The Navajo Nation lacks major infrastructure to support healthy and safe living environment.

Essential Service Gaps - Only 1/5 of the total 23,000 Navajo elderly population are receiving limited healthcare and other support services.

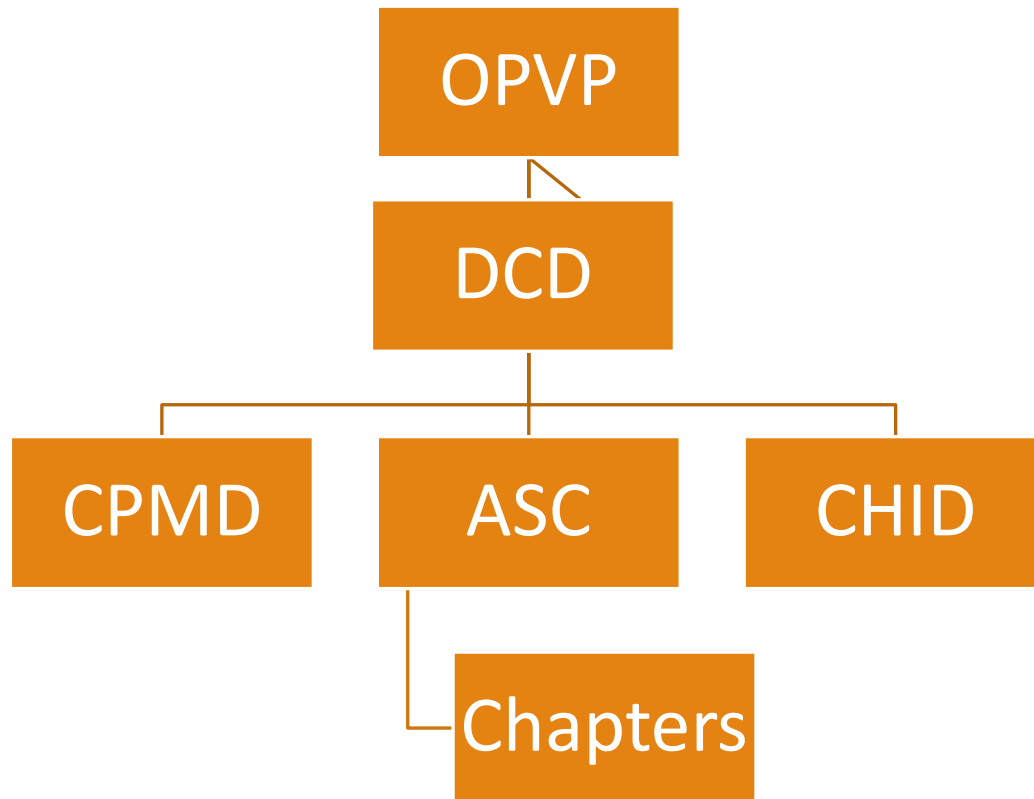
~ from Navajo Nation Initial Response on NHCR/NIHB

Local Public Health System



The connection between
Tribal **community development**
and public health

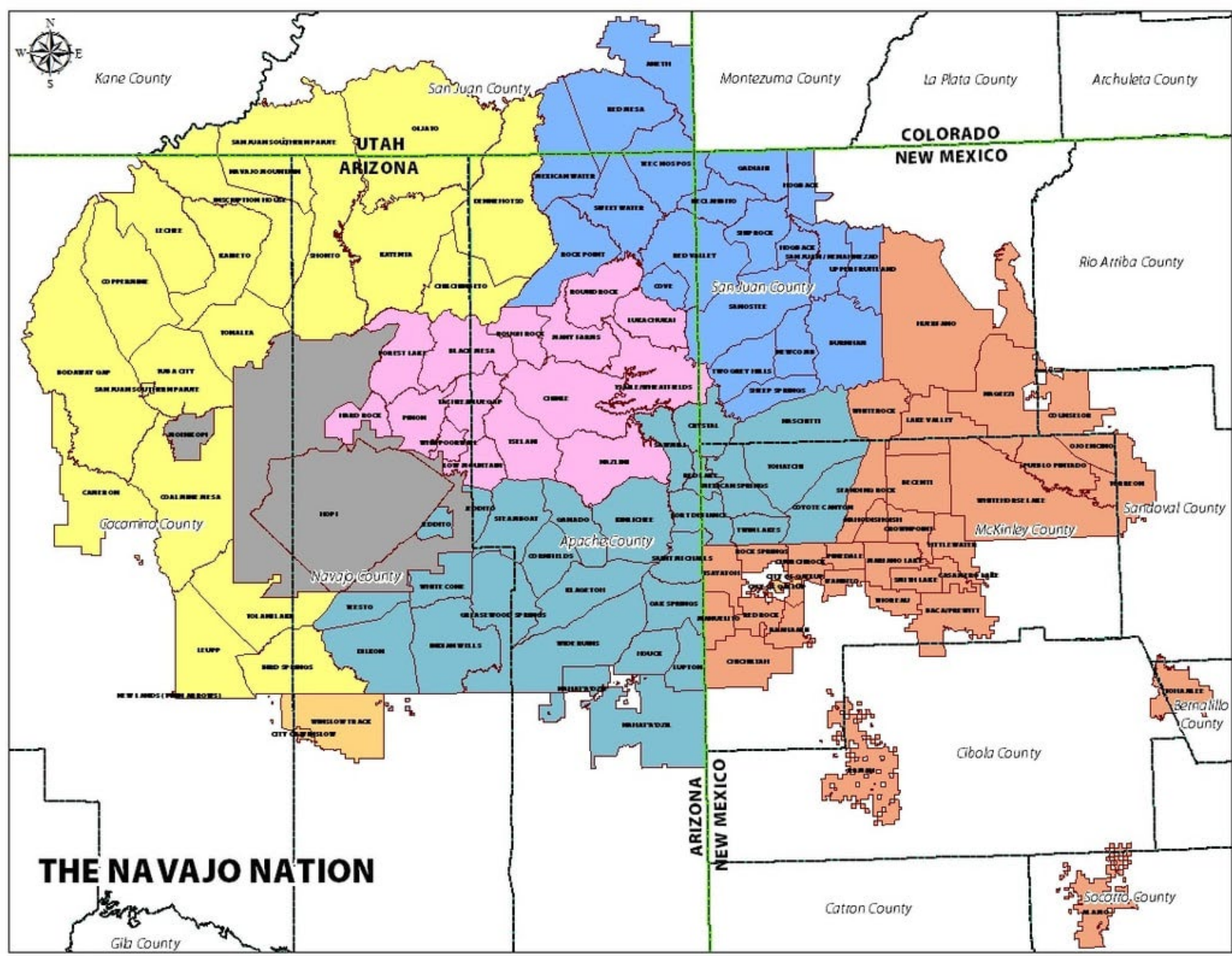
Navajo Nation Division of Community Development



On March 13, 2020, the Navajo Nation declared a Public Health State of Emergency and locked down the Navajo Nation government including local community governance.

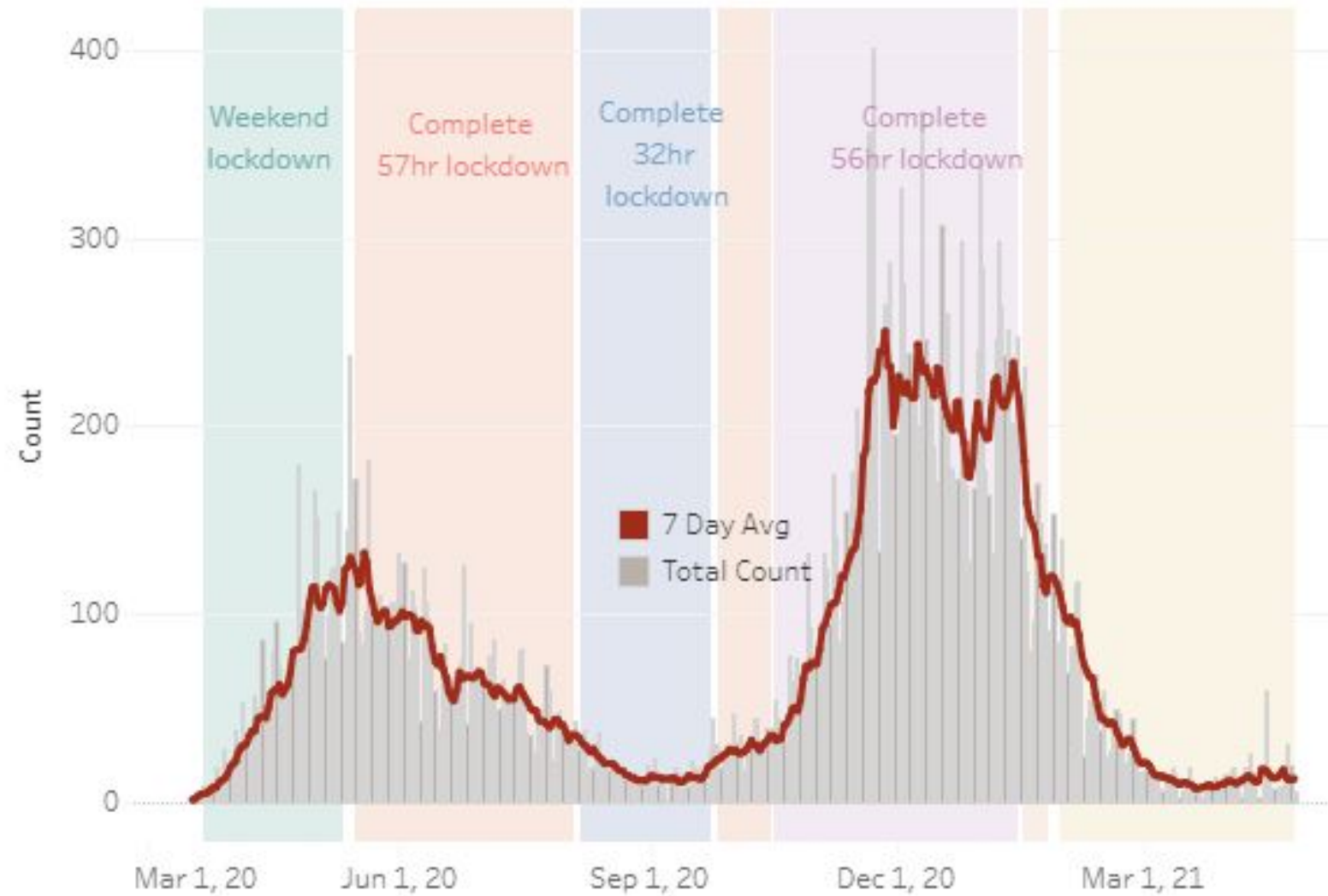
The Division of Community Development (DCD) is responsible for providing emergency management response support to 110 Navajo Chapter communities.

The Administrative Service Centers (ASC) Department was established to provide technical assistance and support.



Timeline

Daily Confirmed Cases on Navajo Nation in All



ASC Department

ASC Department staff activated the Incident Command System (ICS) and established the DCD Chapter Branch within the Health Command Operations Center (HCOC).

Under the Planning Section, the DCD Chapter Branch established **8 service area emergency communications centers** under ASC Offices.

8 Staging Post or Points of Distribution were then created with Incident Command Teams at 8 Chapters that volunteered to lead distribution of supplies and community coordination efforts.

1. Gallup-Baca ASC
 - THOREAU CHAPTER, NM
2. Crownpoint ASC
 - STANDING ROCK CHAPTER, NM
3. Chinle ASC
 - CHINLE CHAPTER, AZ
4. Dilkon ASC
 - WHITECONE CHAPTER, AZ
5. Fort Defiance ASC
 - GANADO CHAPTER, AZ
6. Kayenta ASC
 - DENNEHOTSO CHAPTER, AZ
7. Tuba City ASC
 - TUBA CITY CHAPTER, AZ
8. Shiprock ASC
 - SHEEPSPRINGS CHAPTER, NM

April 23, 2020

ASC employee died from COVID

https://www.democracynow.org/2020/5/5/remembering_valentina_blackhorse_navajo_nation_covid

Remembering Valentina Blackhorse, Beloved 28-Year-Old Navajo Community Activist Who Died of COVID-19



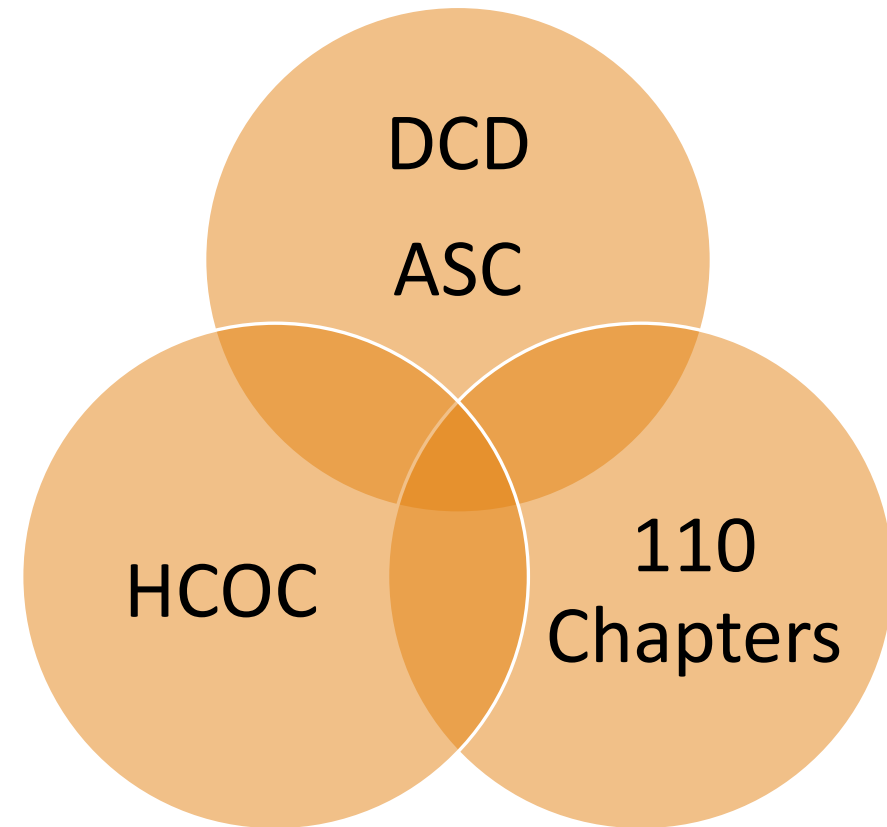
Lessons Learned

Lessons learned from the Navajo Nation
Division of Community Development COVID-19
Emergency Response:

Community Development and Tribal Public
Health must be coordinate in cross sector
partnerships

Local community Chapters (neighborhoods) are
critical in successful emergency response and
health outcomes.

Emergency management coordination and
leadership from local communities impacts the
local public health system.





QUESTIONS & ANSWERS
THANK YOU!