

# The Electronic Case Reporting Roadmap: An Implementation Guide for Tribes & TECs

Sophie Sembajwe, MSPH; Sarah Price, MPH  
National Indian Health Board



## Project Overview

### Overview of Electronic Case Reporting (eCR):

eCR is the automated, real-time exchange of case report information between electronic health records (EHRs) and public health authorities. eCR securely transfers patient and clinical information from healthcare providers to public health entities for disease tracking, case management, contact tracing, and other public health activities.

### NIHB's Tribal Data Sovereignty Project for eCR:

In partnership with the Centers for Disease Control and Prevention (CDC), NIHB launched several initiatives to support use of eCR to improve Tribal data access, apply data to real-time public health decisions, and increase Tribal data sovereignty. Key efforts included:

- A Pilot Project: Providing direct funding and technical assistance to Tribes and TECs to implement direct eCR connections to receive public health data.
- Evaluating Tribal eCR implementation through key informant interviews of pilot Tribal eCR implementers.
- Developing the **Tribal eCR Roadmap** based on the evaluation of and lessons learned from the pilot projects and key informant interviews

### The eCR Roadmap for Tribes and TECs aims to:

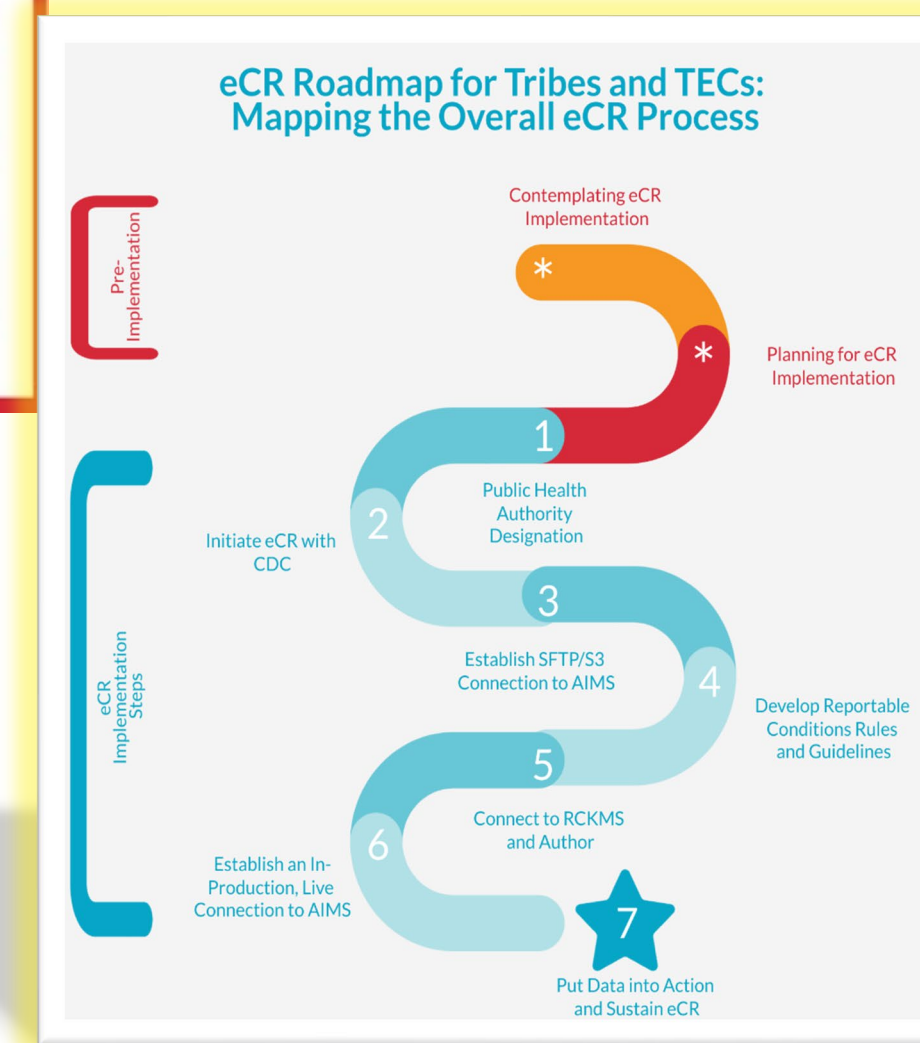
- Make eCR connections more accessible to Tribes and Tribal Epidemiology Centers (TECs) by outlining clear steps to achieving a direct eCR connection
- Outline challenges Tribes and TECs may face in connecting to eCR and share resources and best practices for overcoming these challenges
- Provide resources and language for Tribes and TECs to advocate for their own legal right to access public health data

## The eCR Roadmap: A Step-by-Step Implementation Guide for Tribes & TECs

### 1 Contemplating eCR Implementation



### 2 Planning for eCR Implementation



### 3 Steps for Implementing a Direct Connection to eCR

- Step 1:** Public Health Authority Designation
- Step 2:** Initiate eCR Process with CDC
- Step 3:** Establish SFTP/S3 Connection to AIMS
- Step 4:** Develop Reportable Conditions Rules and Guidelines
- Step 5:** Connect to RCKMS and Author
- Step 6:** Establish an In-Production, Live Connection to AIMS
- Step 7:** Put Data into Action and Sustain eCR

## Next Steps: Building on the eCR Roadmap

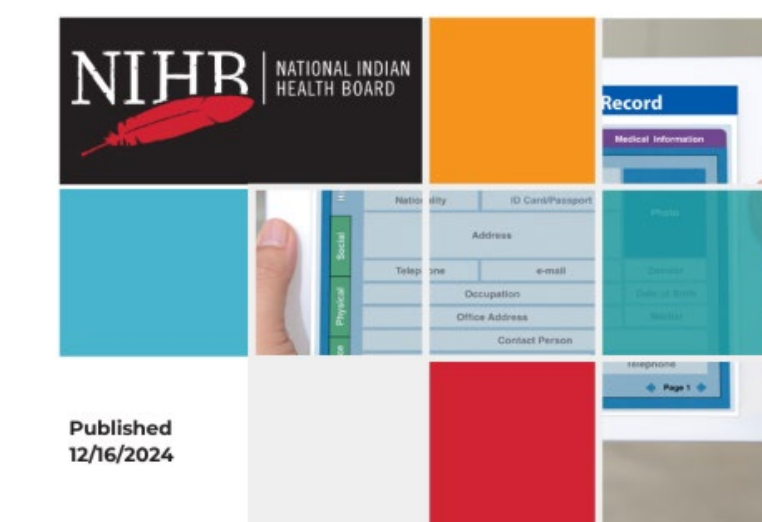
Through funding from the CDC, NIHB will:

- Continue to support Tribes in directly connecting to eCR and connecting indirectly through formalized local and/or state partnerships
  - In collaboration with the National Council of Urban Indian Health (NCUIH), support Urban Indian Organizations (UIOs) in upgrading their health systems to become eCR-capable
- NIHB plans to use lessons learned on the ground to:
- Explore effective ways Tribes can **leverage eCR data received indirectly** through state and/or local partnerships
  - Develop a **Guide for Tribal and UIO Healthcare Organizations** to establish eCR in their facilities

## Access the eCR Roadmap

### ELECTRONIC CASE REPORTING ROADMAP

For Tribes and Tribal Epidemiology Centers



## Join Our Tribal Public Health Data Modernization Learning Community!

<https://lp.constantcontactpages.com/sl/bVeuBIK/eCR>



### Email us!

Have questions? Email us at [eCR@nihb.org](mailto:eCR@nihb.org)

### Acknowledgment

This project is supported by the Centers for Disease Control and Prevention of the U.S. Department Health and Human Services [HHS] with 100% percent funded by CDC/HHS. The contents are those of the author(s) and do not necessarily represent the official views of, nor an endorsement, by CDC/HHS or the U.S. Government