



ARIZONA

HEALTH CARE COST CONTAINMENT SYSTEM

Overview of Tribal Health Care and Arizona Medicaid

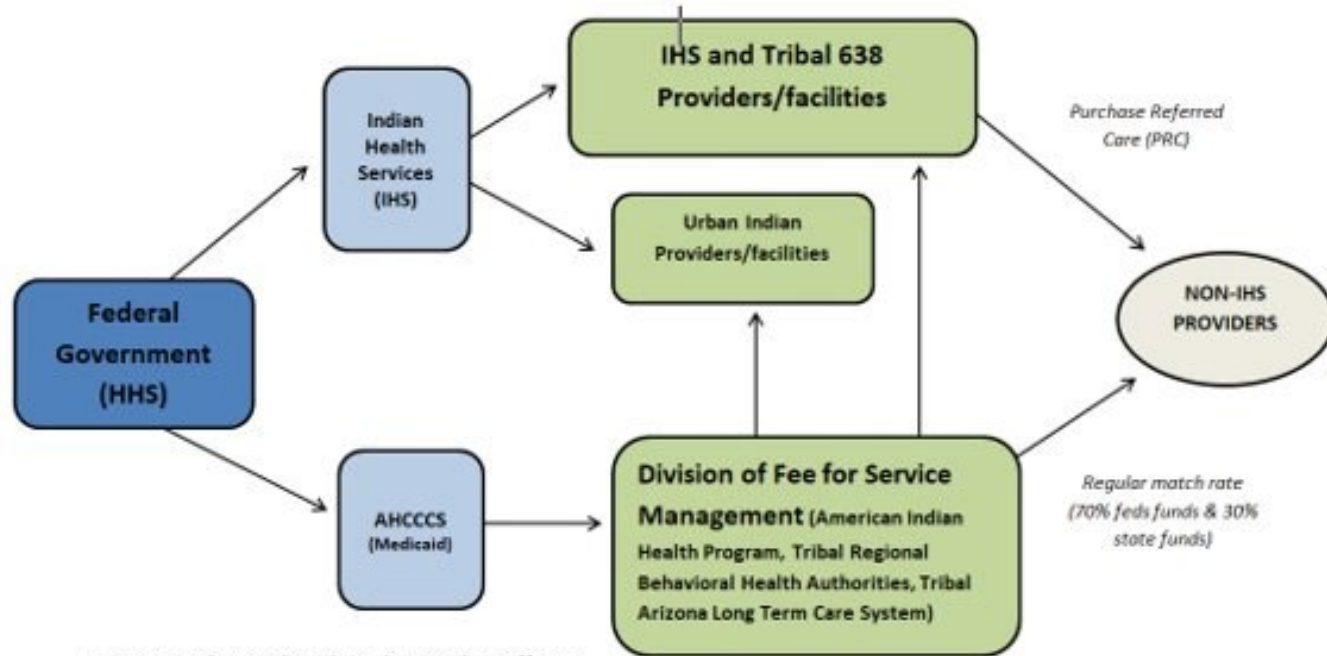
Leslie Short, Deputy Assistant Director
Division of Fee -for -Service Management

Basis For Federal Health Benefits for American Indians: Authorities

- Treaties exchanged native lands for federal trust responsibilities and benefits
- Snyder Act authorized health services for American Indians (1921)
- Transfer Act placed Indian health programs in the Public Health Service (1955)
- Indian Self -Determination and Education Assistance Act (1975)
- Indian Health Care Improvement Act and Amendments (1976)



AHCCCS & the Tribal Health Care Delivery System: Financing

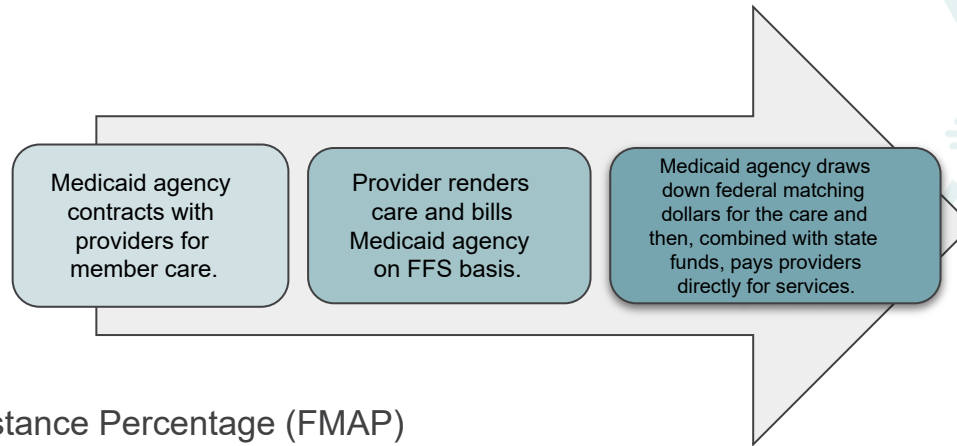


AHCCCS is the Medicaid Authority that offers:

- Comprehensive coverage for low-income Native Americans
- Revenues for Tribal health providers

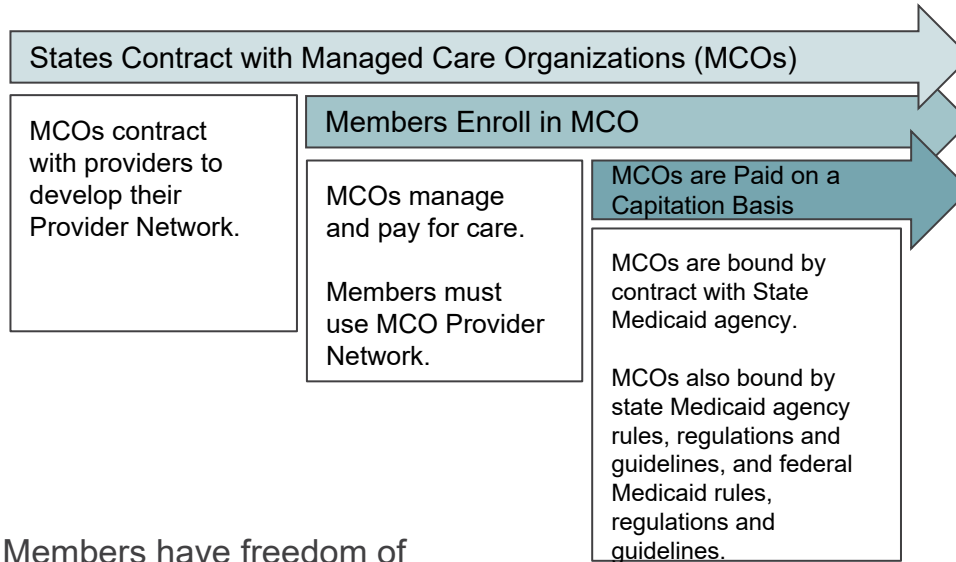
Medicaid FFS Care Delivery System

Traditionally, Medicaid has been administered on a “fee for service” basis:



Federal Medical Assistance Percentage (FMAP) for Arizona is ~70%. These are the “federal matching dollars.” IHS/638 facilities primarily receive 100% FMAP.

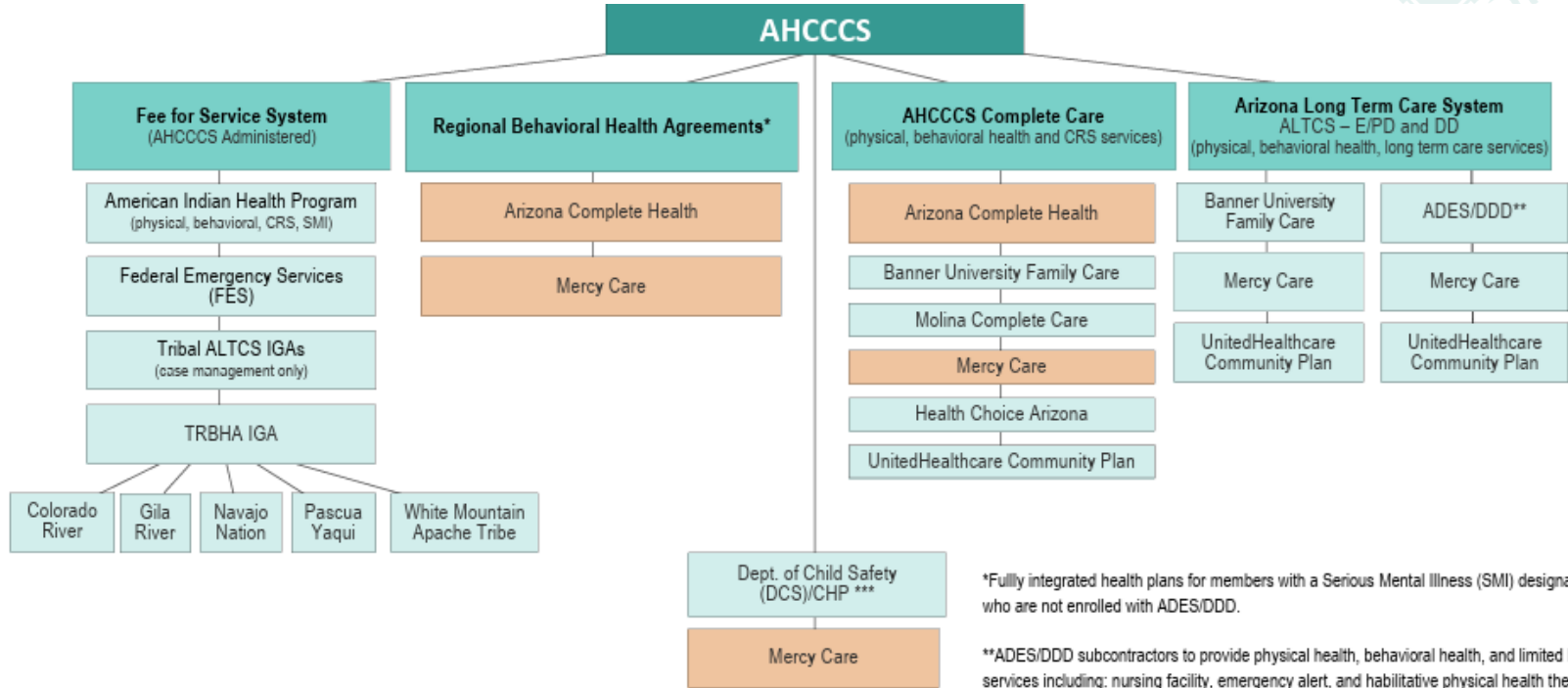
Medicaid Managed Care Delivery



American Indian Members have freedom of choice between MCOs and FFS and can receive care at any IHS/Tribal 638 facility at any time regardless of health plan.



AHCCCS Care Delivery System Effective



*Fully integrated health plans for members with a Serious Mental Illness (SMI) designation who are not enrolled with ADES/DDD.

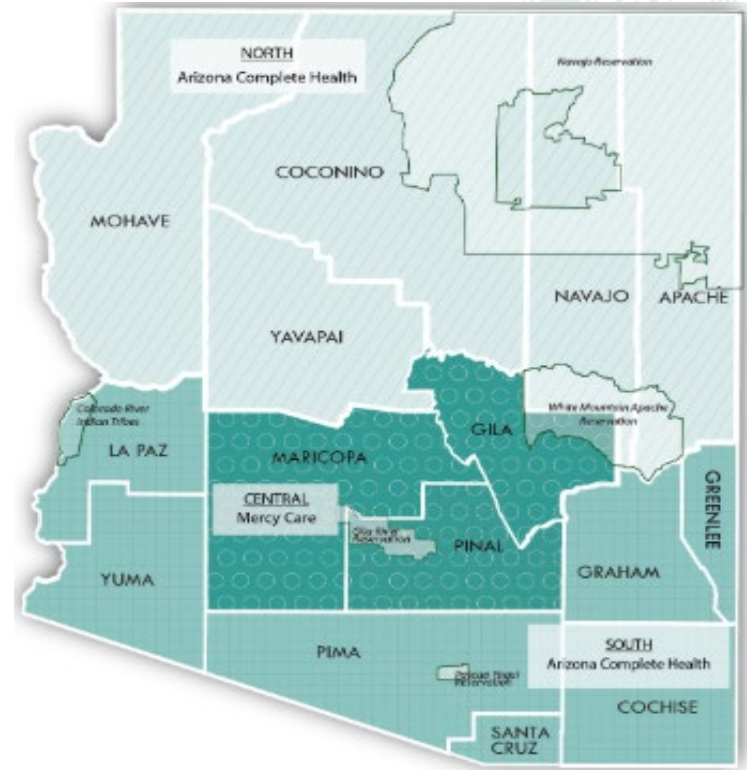
**ADES/DDD subcontractors to provide physical health, behavioral health, and limited LTSS services including: nursing facility, emergency alert, and rehabilitative physical health therapy for members age 21 and over. ADES/DDD to provide all other LTSS and coordinate with AHCCCS' Division of Fee for Service Management to provide services for the Tribal Health Program for American Indian members.

***DCS/Comprehensive Health Plan (CHP) statewide subcontractor to provide physical and behavioral health services.



AHCCCS Complete Care Health Plans (ACC Plan)

- Integrated health plans that include physical and behavioral healthcare service providers, including Children's Rehabilitative Services (CRS)
- Manage the provider network for all healthcare services
- Provide comprehensive managed care for the whole person
- ACC-Regional Behavioral Health Authorities (RBHAs)
- Members are established with a PCP and case management is provided as an administrative service.



Note: Zip codes 85542, 85192, 85550 representing San Carlos Tribal area are included in the South GSA.

Behavioral Health Services

- Most members receive all behavioral health services through their chosen ACC Plan
- Services include, but are not limited to:
 - Mental health counseling
 - Psychiatric and psychologist services, and
 - Opioid Use Disorder treatment
- Individuals determined to have a Serious Mental Illness (SMI) are served through an ACC -RBHA or TRBHA



Division of Fee -for -Service Management (DFSM)

- DFSM is the is the division within AHCCCS which serves as the health plan for Fee -For-Service (FFS) Medicaid members and reimburses claims for other persons not enrolled with a contractor.
- DFSM is responsible for the clinical, administrative and claims functions of FFS populations of approximately 250,000 members, including:
 - American Indians enrolled in the American Indian Health Program (AIHP)
 - Members enrolled with the Tribal Regional Behavioral Health Authorities (TRBHAs) for behavioral health services,
 - Tribal Arizona Long Term Care Services (ALTCS), and
 - Individuals in the Federal Emergency Services Program (FESP)

American Indian Health Program (AIHP)

- AI/AN who are eligible and enrolled in AHCCCS may choose to receive coverage through AIHP or an ACC plan.
- Provides medically necessary services, including preventative and behavioral health care services, including Children's Rehabilitative Services (CRS) and AIHP members with an SMI designation.
- Members may receive services from any Indian Health Services (IHS) provider, Tribal 638 provider, or any AHCCCS registered non-IHS provider
 - Per the Provider Participation Agreement all AHCCCS registered providers are required to accept AIHP.
- AI/AN members can switch their enrollment between AIHP and an ACC plan at any time.

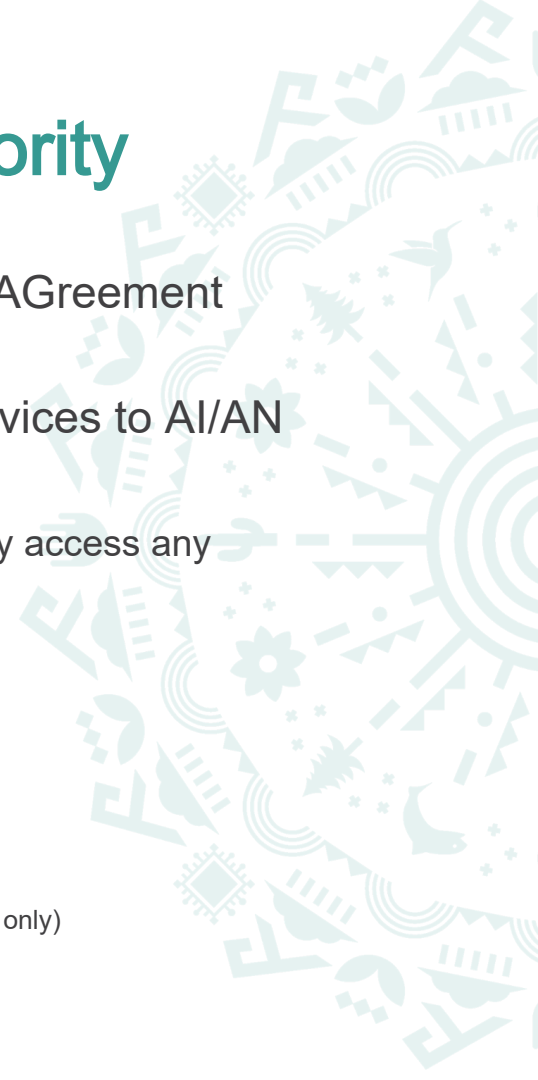
AIHP, TRBHA and IHS/Tribal 638 Facilities

AIHP - American Indian Health Program	TRBHA - Tribal Regional Behavioral Health Authority	IHS - Indian Health Services/Tribal 638 Facility
<ul style="list-style-type: none">• Provides medically necessary services for AHCCCS enrolled American Indians/ Alaskan Natives (AI/ AN) members, including preventative and behavioral health care services.• AI/ AN members can switch their enrollment between AIHP and an ACC plan at any time.	<ul style="list-style-type: none">• Tribal entities that have an IGA with the AHCCCS administration for the provision of behavioral health services to AI/ AN members.• Coordinate the delivery of comprehensive mental health services.• AI/ AN members	<ul style="list-style-type: none">• The principal health care system/ provider for federally recognized Tribes and AN in the United States; responsible for providing federal health services.• AI/ AN members may receive health care from IHS or Tribally-Operated 638 programs.



Tribal Regional Behavioral Health Authority

- TRBHAs are Tribal entities that have an Intergovernmental Agreement (IGA) with the AHCCCS Administration
- Coordinate the delivery of comprehensive mental health services to AI/AN members assigned to the Tribal entity
 - TRBHAs are responsible for coordinating care, while members may access any AHCCCS-registered provider for behavioral health care
- There are five TRBHAs across the state:
 - Gila River Tribe
 - Navajo Nation
 - Pascua Yaqui Tribe
 - White Mountain Apache Tribe
 - Colorado River Indian Tribes (IGA is for the providing crisis response services only)
- Approximately 67,000 AIHP members are enrolled with a TRBHA



TRBHAs and Tribally Operated 638 Facilities

TRBHA	Tribally Operated 638 Facilities
<ul style="list-style-type: none">● Gila River, Navajo Nation, Pascua Yaqui, White Mountain Apache● Elibiel Tribal members are assigned to their respective TRBHA● Coordinate delivery of comprehensive mental health services	<ul style="list-style-type: none">● Gila River, Pascua Yaqui, and White Mountain Apache (provider type 77)● Any AI/AN member may receive services regardless of enrollment choice● Do not need to be enrolled with a TRBHA

American Indian Medical Home (AIMH)

First model in the nation to introduce “managed care” without the financial aspects, that is care management benefits, such as:

- Primary care case management
- 24/7 access to a nurse call line
- Diabetes education
- Bi-directional status with the State’s Health Information Exchange
- Helps address health equity
- Currently 9 AIMHs across the state
- Approximately 36% of AIHP members are empaneled with an AIMH



Tribal Arizona Long Term Care Services (Tribal ALTCS)

- Provides Medicaid services to elderly and/or physically disabled American Indians determined eligible for ALTCS
- An integrated health plan that covers acute medical and behavioral health services, and long term care services
- Members are enrolled with Tribal ALTCS if they live, or have lived, on a reservation prior to admission into an off-reservation facility
- AHCCCS works in partnership with seven Tribes and one Urban Indian Health Center, thru IGAs or a contract, to provide long term care case management services to respective tribal members

Tribal ALTCS IGAs

- The goal of Tribal ALTCS is to provide culturally competent, compassionate care to enrolled members of each American Indian Tribe.



Gila River Indian Community



The Hopi Tribe



Navajo
Nation



Pascua Yaqui
Tribe



San Carlos Apache Tribe



Tohono O'odham Nation



White Mountain Apache Tribe

Reporting Quality of Care and/or Fraud, Waste, Abuse

- AHCCCS is committed to ensuring members receive quality health care and are able to access services.
 - Report Quality of Care Concerns that include (but not limited to): inability to receive health care services; concerns about the quality of care received; issues with healthcare providers or health plans; or timely access to services.
- The Office of Inspector General (OIG) investigates reports of suspected fraud, waste, and abuse of AHCCCS programs
 - Report member, provider or contractor suspected fraud or abuse

Member Resources

- [Covered Medical Services](#)
- [Accessing Behavioral Health Services](#)
- [SMI Designation & Services](#)
- [Provider Listings](#)



Provider Resources

- [AHCCCS Online Provider Portal](#)
- [AHCCCS Medical Policy Manual \(AMPM\)](#)
- [Fee-for -Service Provider Billing Manual](#)
- [IHS/Tribal Provider Billing Manual](#)
- [Provider Training Resources](#)
- [Subscribe to DFSSM Email Notifications/Updates](#)





Questions?