

Utah Department of Health and Human Services CMS PHX I/T/U Training

Jeremy Taylor | Tribal Health Liaison

Michelle Smith | Director, Office of Eligibility Policy & H.R. 1 Project



Utah Department of
Health & Human Services
American Indian/Alaska Native Health & Family Services



Utah Department of
Health & Human Services
Integrated Healthcare



Utah Department of
Health & Human Services
American Indian/Alaska Native Health & Family Services

Office of American Indian/Alaska Native Health and Family Services (IHFS)

State of Utah DHHS

Office of American Indian/Alaska Native Health and Family Services (IHFS)



Ozzy Escarate

director

oescarate@utah.gov

385-454-2392



Jamie Harvey

**ICWA
administrator**

jamieharvey@utah.gov

385-270-2948



Jeremy Taylor

**tribal health
liaison**

jeremytaylor@utah.gov

385-227-2078



Alex Merrill

**tribal health
epidemiologist**

armerrill@utah.gov

385-358-3566



Hilary Makris

**tribal health
program
manager**

hmakris@utah.gov

385-245-8595



Kassie John

**opioid & tobacco
programs
coordinator**

kassiejohn@utah.gov

385-584-9958



Utah Department of
Health & Human Services
American Indian/Alaska Native Health & Family Services

The **8 tribes** in Utah



Confederated Tribes of the Goshute

<https://ctgr.us/>

435-234-1138



Paiute Indian Tribe of Utah

<https://pitu.gov/>

435-238-4987



San Juan Southern Paiute Tribe

<https://www.sanjuanpaiute-nsn.gov/>

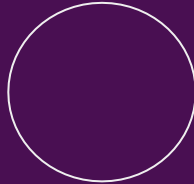
928-212-9794



Northwestern Band of Shoshone Nation

<https://www.nwbshoshone.com/>

435-734-2286



Skull Valley Band of Goshute

435-831-4079



Ute Indian Tribe of the Uintah and Ouray Reservation

<https://www.utetribe.com>

435-722-2374



Ute Mountain Ute Tribe

<https://www.utemountainutetribe.com/>

970-565-3751



Navajo Nation

<https://www.navajo-nsn.gov/>

Indian Health System (I/T/U)

Indian Health Service (IHS) / Tribal 638/Tribal Public Health / Urban Indian Organization

IHS is an operating division within the U.S. Department of Health and Human Services

Tribally owned and operated facilities

UICSL is a limited-healthcare and outreach referral service of the Urban Indian Health Organization (UIHO)



IHS Uintah-Ouray Service Unit



IHS Ute Mountain Ute Service Unit



Sacred Circle Healthcare



Utah Navajo Health System



Urban Indian Center of Salt Lake



Four Points Health



Nat-Su Healthcare



NW Band of Shoshone Nation



Utah Department of Health & Human Services
American Indian/Alaska Native Health & Family Services

Location of tribal lands with Indian Health System (I/T/U)



Urban Indian
Center of Salt Lake

<https://uicsl.org/>



Sacred Circle
Healthcare

<https://sacredcircle.com/>



Utah Navajo
Health System

<https://www.unhsinc.org/>



Four Points
Health

<https://fourpointshealth.org/>



IHS Service
Units



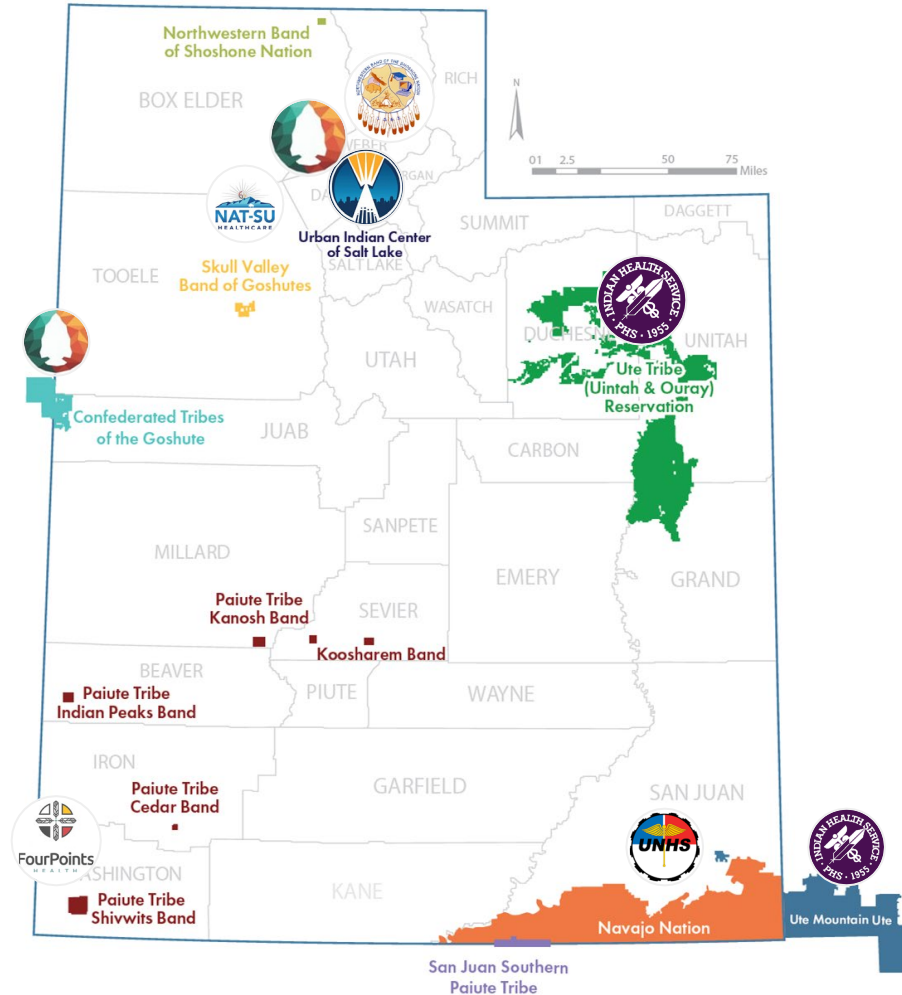
Nat-Su
Healthcare

<https://natsuhealthcare.com/>



NW Band of
Shoshone
Nation

<https://www.nwbshoshone.com/health-services/>



**DHHS engages tribes in consultation through the
“Utah DHHS Federally Recognized Tribes of Utah
Consultation and Title V Urban Indian Organization
(UIO) Conferment Policy.”**

Consultation means an enhanced form of communication that emphasizes mutual trust, respect, and shared responsibility. It is the open and free exchange of information and opinion among parties that leads to mutual understanding and comprehension.

DHHS Tribal Consultation & Conferement policy

- Each Tribal Government has an independent relationship with each other, the State of Utah, and the Federal Government.
- DHHS consults with Tribal Governments on new and existing health and human services policies, programs, functions, services and activities that have Tribal implications
- DHHS confers with Urban Indian Organizations on new and existing health and human services policies, programs, functions, services and activities affecting Utah's urban indian population
- True and effective consultation shall result in information exchange, mutual understanding, and informed decision-making on behalf of the Tribal governments involved and the State of Utah.

Utah Indian Health Advisory Board (UIHAB)

Tribal representatives with **expressed authority from their governments** to maintain an open dialog with the Department of Health and Human Services representatives on issues related to health.

Elected tribal leaders are welcome and able to speak on behalf of their tribe.

I/T/U representatives can also participate with authority from its Board of Directors.



Utah Department of
Health & Human Services
American Indian/Alaska Native Health & Family Services

Utah Medicaid eligibility

How to apply for Medicaid today

For complete instructions go to: <https://medicaid.utah.gov/apply-medicaid>

- Use the single, streamlined application and any necessary addendums

Apply through the Department of Workforce Services (DWS):

- In person at [a local DWS office](#)
- Mail completed application to:
Department of Workforce Services
PO Box 143245
Salt Lake City, UT 84114-3245
- Fax application to: 801-526-9505
- Or apply online at jobs.utah.gov using the [myCase application portal](#)

Tips and hints for Medicaid applicants

- Make sure that either the applicant or the Power of Attorney (POA) have signed the application
 - POA documentation needs to be provided
- Make sure every question is answered and do not leave any blank or unchecked
 - At minimum indicate “N/A”
- If you are having a hard time obtaining a requested verification, contact DWS and request an extension to the deadline
 - You can also contact 211 and Take Care Utah for assistance
- Verifications
 - Examples: life insurance or burial plans
 - Some items can be electronically verified: Social Security income and disability status, Office of Recovery Services information (child support and alimony paid through ORS,) Unemployment Insurance (UI), and some asset and wage data
- All information needs to be reported on the application, but the amounts don't need to be exact, a request for verification will be sent by the eligibility worker

Eligibility process

- The application is accepted and reviewed by the eligibility worker
- The worker electronically verifies citizenship, immigration status, Social Security, UI, ORS, Motor Vehicles, new hire and wage data
- Any eligibility factors not verified electronically will be requested on a verification checklist
- Once all verification is provided, the worker will process the application
 - Most applications are required to be processed within 30 days
 - A client who claims a disability will be allowed 90 days for processing
- Eligibility decision notification will be sent to the applicant
- Medicaid programs are required to be reviewed every 12 months
- It's essential that contact information is kept up to date

Medicaid basic eligibility criteria

- U.S. citizen or qualifying immigrant
 - If not, you can only receive Emergency Medicaid services
- Resident of Utah
 - Factors that can indicate no intention to reside in Utah
- Resident of a household or an institution
- Meet specific program criteria
- Meet the asset limit, if the program has one
- MAGI vs Non-MAGI income methodology
- Meet the income limit, or pay a spenddown or a contribution to the cost of care

MAGI-based eligibility groups

- Parents and Caretaker Relatives (PCR) with dependent children (About 34% FPL)
 - Move to 12-Month Transitional Medicaid if had 3 of 6 months of PCR and earned income increases above the income limit
 - Move to 4 month extended when ineligible as a result of spousal support payments
- Pregnant Woman (139% FPL)
 - Includes 12 months postpartum coverage
- Children under age 19 (133% and 139% FPL)
 - 12 months continuous coverage

Eligibility groups

MAGI-based eligibility groups

- Adult Expansion Medicaid (133% FPL)
 - Age 19 to 64
- Targeted Adult Medicaid (5% FPL)



Eligibility groups



Employer Sponsored Health Insurance (ESI)

Adult Expansion requirements

- Members with access to a qualified ESI plan will have to enroll
- Medicaid will reimburse their portion of the monthly premium
- Ineligible for 12 months if they fail to enroll

MAGI-based eligibility groups

- Children's Health Insurance Program or (**CHIP**) is a state health insurance for children who do not have other insurance and do not qualify for Medicaid
 - Plan B (150% FPL)
 - Plan C (200% FPL)
 - State CHIP (200% FPL)
 - For non-citizen children of working families
 - Special open enrollment began May 1, 2025 and closed January 31, 2026
 - Enrollment for State CHIP is currently closed.
- **UPP** - Utah's Premium Partnership for Health Insurance (200% FPL)
 - Helps with health insurance premiums

Eligibility groups

Other medical assistance programs

- Former Foster Care
 - Individuals ages 18-26 who were in foster care under state custody on or after their 18th birthday
 - They had to be receiving Medicaid at some point during the foster care period in which they turned age 18
- Foster Care Independent Living
 - Individuals who were in foster care under state custody on or after their 18th birthday
 - They did not have to be eligible for Medicaid while in state custody and they can receive this coverage until they reach age 21
 - This includes members who were in foster care in any state or tribe

Eligibility groups

Other medical assistance programs

- Presumptive Eligibility
 - Provides temporary Medicaid coverage while DWS makes a decision
 - Determined by a qualified provider
 - Baby Your Baby (BYB) - For pregnant women
 - Hospital Presumptive Eligibility (HPE) - PCR, Child, Pregnant Woman, Former Foster Care and Adult Expansion

Eligibility groups

Medically Needy programs

- When income exceeds limits for other programs, individuals can “spenddown” income to become eligible
 - An asset test applies
 - Countable Income (after deductions and disregards)
 - Individuals may pay cash or use allowable medical bills they owe to meet the spenddown
 - Individuals pay only for the months they want coverage
 - Pregnant members are only required to meet the monthly spenddown once during pregnancy

Eligibility groups

Other medical assistance programs

- Aged, Blind and Disabled individuals (income under 100% FPL)
 - Age 65 years or older or meets the requirements for blindness/disability
 - Established by Social Security or by the State Medical Disability Office
 - An asset test applies
- Medicaid Work Incentive (MWI) premium
 - A working disabled person who is eligible for the Medicaid Work Incentive (MWI) program may owe a premium, based on a percentage of income, to become eligible
 - An asset test applies
- Medicare Cost Sharing
 - Qualified Medicare Beneficiaries Program (QMB) pays Medicare Part A and Part B premiums, deductibles, and copayments for low-income Medicare recipients
 - Specified Low-Income Medicare Beneficiaries (SLMB) pays the Part B Medicare premium only
 - Qualifying Individuals (QI) pays the Part B Medicare premium

Eligibility groups

Home and Community-Based Waivers

- Waiver Programs
 - Provide extra services as an alternative to live at **home** rather than an institution
 - Utah has 9 home and community based waiver programs
 - Aging Waiver
 - Medically Complex Children Waiver
 - Brain Injury Waiver
 - Community Transitions Waiver
 - Utah Community Supports Waiver
 - New Choices Waiver
 - Physical Disabilities Waiver
 - Limited Supports Waiver
 - Technology Dependent Waiver

Eligibility groups

Nursing Home

- Nursing Home Medicaid provides services “in addition to” those normally provided by traditional Medicaid
 - Must meet basic eligibility criteria and medical criteria for nursing home level of care in a skilled nursing facility
- \$2,000 asset limit
 - Look back period of 60 days from the date of application for a transfer of assets penalty period
 - Medicaid will not pay for long-term care services during the penalty period

Eligibility groups

- The **Justice Involved** program was approved by the federal government on July 2, 2024
- This new program will help inmates as they re-enter their community
- Up to 90 days before an inmate's expected release date, the program will cover limited Medicaid benefits to those in a state prison, county jail, or juvenile justice facility
- With this program, Utah Medicaid intends to build a bridge to community-based care for incarcerated individuals, offering them services to stabilize their condition(s) and establish a re-entry plan prior to release

Justice Involved

Members who don't have copays:

- Alaska Natives
- Members eligible for Cancer Medicaid
- Targeted Adults Medicaid (TAM) members
- Members with Temporary Assistance to Needy Families (TANF)/Family Employment Program (FEP)
- American Indians
- Members under the age of 18
- Pregnant members
- Members getting hospice care

Copay information

Covered Medicaid benefits:

- Ambulance
- Birth Control
- Case Management
- Chiropractic
- Dental
- Home Health
- Hospice
- Hospital
- Lab and X-ray
- Maternity and Midwife Services
- Medical Supplies
- Nursing Home
- Over-the-Counter Drugs
- Personal Care
- Physical/Occupational Therapy
- Prescriptions
- Specialists
- Speech and Hearing
- Vision
- Waiver Programs

Program benefits

Early and Periodic Screening, Diagnostic and Treatment (EPSDT)

- EPSDT is a program for children ages birth through twenty
- It provides medical and dental care for children enrolled in Medicaid. Medicaid ensures that each child has access to necessary check-ups and preventive dental care

Restriction Program

- Medicaid members may be referred to and enrolled in the Restriction Program
- This program provides safeguards against inappropriate and excessive use of Medicaid services

Program benefits

Tobacco Cessation Program

- The Medicaid Tobacco Cessation Program provides support and information to help pregnant women quit using tobacco
- Women are given an opportunity to participate in this program without cost

Living Well with Chronic Conditions Program

- The Living Well with Chronic Conditions Program offers weekly workshops in local community settings

Oral Health Initiative Program

- Utah Medicaid is participating in the Centers for Medicare and Medicaid Services' (CMS) Oral Health Initiative Learning Collaborative (OHI)
- OHI seeks to improve the use of preventive dental services by children enrolled in Medicaid or CHIP

Program benefits

Adult Dental

- Adults aged 21 and older are eligible for full dental benefits

Housing Related Services and Supports (HRSS)

- The Targeted Adult Medicaid (TAM) program offers the HRSS program to those TAM members who are experiencing chronic homelessness to obtain secure, stable housing

Pre-release Services for Incarcerated Individuals

- Services include but are not limited to intensive case management, Medication-Assisted Treatment (MAT) services for all types of Substance Use Disorders (SUD), a 30-day supply of prescription medication upon release, lab and radiology services, targeted outpatient services, diagnosis and treatment of physical and behavioral health conditions, and screening for housing related services

Program benefits

History of Tribal Consultation on Community Engagement (CE)

When Utah originally submitted its "fallback" expansion plan in **March 2019** (following the passage of SB 96), the proposed community engagement (work) requirement was modeled closely after the **SNAP (food stamp) exemptions**

- **Initial omission:** March 2019 drafts lacked tribal membership exemptions
- **Formal consultation:** UDOH engaged with the eight federally recognized tribes to refine policy
- **Advocacy win:** TTAG comments late 2019 secured tribal exemption
- **Trust responsibility:** UDOH modified the CE amendment to include the tribal exemption
- **Implementation:** Exemption launched with CE on January 1, 2020

History of Utah's CE

- **New rules on hold:** The "Eligibility & Enrollment" final rule is now on hold until October 1, 2034
- **Community Engagement:** Starting January 1, 2027, Adult Expansion and TAM members will have to meet a new Community Engagement requirement
 - Tribal members are exempt
- **Less retroactive coverage:** Retroactive coverage will be reduced as of January 1, 2027
- **More frequent renewals:** The Adult Expansion and TAM population will need to renew their coverage more often, starting January 1, 2027
 - Tribal members are exempt
- **New immigrant eligibility rules:** A new definition for "qualified immigrants" will be in place on October 1, 2026
- **Marketplace program impacts:** Changes to the federal Marketplace will also affect our programs

H.R. 1 Key Medicaid eligibility provisions

Utah's H.R. 1 Stakeholder Engagement

**Community
Partner
Engagement
Group**

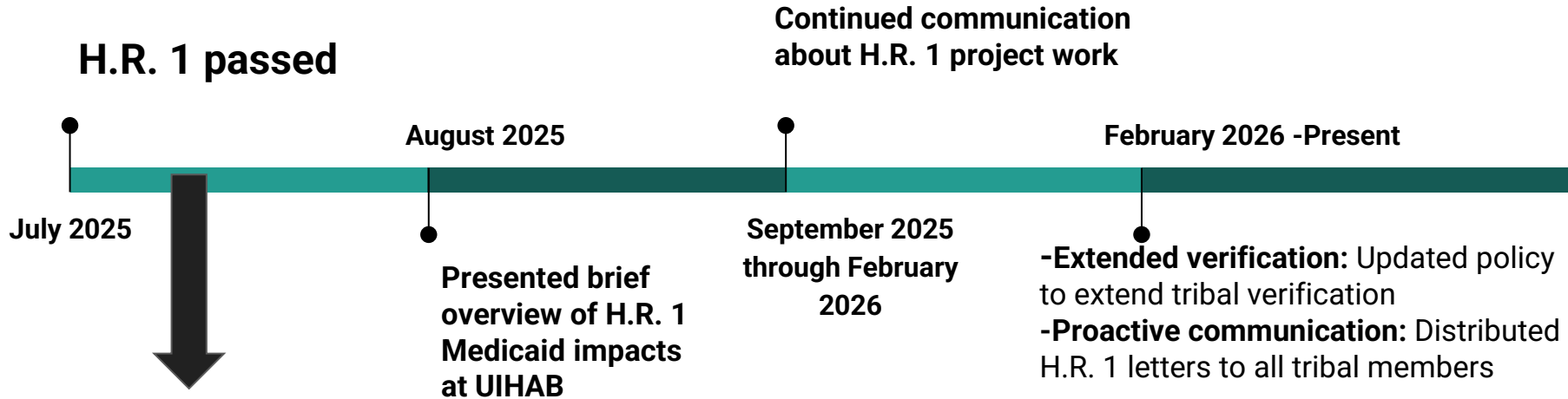
MCE workgroup

UIHAB

**Beneficiary
Advisory
Committee
(BAC)**

**Medicaid
Advisory
Committee
(MAC)**

H.R. 1 Stakeholder engagement



H.R. 1 Tribal Collaboration



Dear Medicaid member,

This letter is to tell you about the new rules for some adults who get Medicaid. These rules are part of a new federal law (H.R. 1 or the One Big Beautiful Bill Act, 2025). Starting January 1, 2027, this law says that certain adults must work or do community activities for 80 hours each month to keep their Medicaid. Some adults will also be required to complete an eligibility review (renewal) every 6 months, instead of every 12 months.

If you are American Indian or Alaska Native (AI/AN) with a verified tribal status, you are exempt from these changes. You do not have to do these work and community activities and will have a review every 12 months.

If your status as AI/AN has **not been verified**, you may have to complete the work requirement each month to keep your Medicaid.

How to get your exemption:

To make sure you are exempt from these changes, you will need to turn in your tribal status verification to the Department of Workforce Services (DWS). Send DWS a copy of **one** of these items for each person in your home who is a tribal member:

- **Tribal ID card:** Your tribal identification/enrollment card or number.
- **CIS paper:** A "Certificate of Indian Blood" signed by the Bureau of Indian Affairs (BIA).
- **IHS Face Sheet:** A medical record certified by IHS as being from their original records. It must show your name and date of birth.
- **Tribal court document:** A tribal court document containing identifying information, such as name and the date of birth.
- **Descendent:** Any of the above documents showing tribal membership through a parent or grandparent. You must provide a birth certificate or court document that shows how you are related to them.

Where to send your verification:

Write your **name and case number** on every page you turn in. You can send your papers by mail, fax, in person, or online to:

- **Online:** You can upload them at jobs.utah.gov/mycase
- **Fax:** Toll-Free: 1-877-313-4717
Local: 801-526-9500
- **Mail:** Department of Workforce Services, Imaging Operations
P.O. Box 143245
Salt Lake City, UT 84114-3245

Notice for AI/AN not verified

Sent to current AI/AN members that have not provided tribal documentation



Dear Medicaid member,

This letter is to tell you about the new rules for some adults who get Medicaid. **You do not have to do anything.**

These rules are part of a new federal law (H.R. 1 or the One Big Beautiful Bill Act, 2025). Starting January 1, 2027, this law says that certain adults must work or do community activities for 80 hours each month to keep their Medicaid. Some adults will also be required to complete an eligibility review (renewal) every 6 months, instead of every 12 months.

Our records show that you are American Indian or Alaska Native (AI/AN) with a verified tribal status. This means you are exempt. You will not have to do the work and community activities. You will still have an eligibility review every 12 months.

If you move or change your phone number, you must tell us. You can update your information by calling:

- Your health plan
- The Department of Workforce Services at 1-866-435-7414
- A Medicaid Health Program Representative at 1-866-608-9422

Visit the Medicaid website at medicaid.utah.gov/obbba for more updates.

Sincerely,

Utah Medicaid

Notice for AI/AN verified

Sent to current AI/AN members that
have provided tribal documentation

Resource Page

- How to Apply for Medicaid
 - For complete instructions go to <https://medicaid.utah.gov/apply-medicaid>
- Health Care Representatives (HPR): 1-866-435-7414
 - <https://medicaid.utah.gov/health-program-representatives/>
- Utah Medicaid member guide:
 - <https://medicaid-documents.dhhs.utah.gov/Documents/pdfs/MemberGuide2025.pdf>
- Utah Medicaid provider information:
 - <https://medicaid.utah.gov/health-care-providers/>
- Utah Medicaid constituent services:
 - <https://medicaid.utah.gov/concern-or-complaint/>
- Utah H.R. 1/OBBBA information and resources:
 - medicaid.utah.gov/obbba

Contact information

Jeremy Taylor - Tribal Health Liaison, Office of American Indian/Alaska
Native Health and Family Services

jeremytaylor@utah.gov

Michelle Smith - Director, Office of Eligibility Policy & H.R. 1 Project

michellesmith@utah.gov